

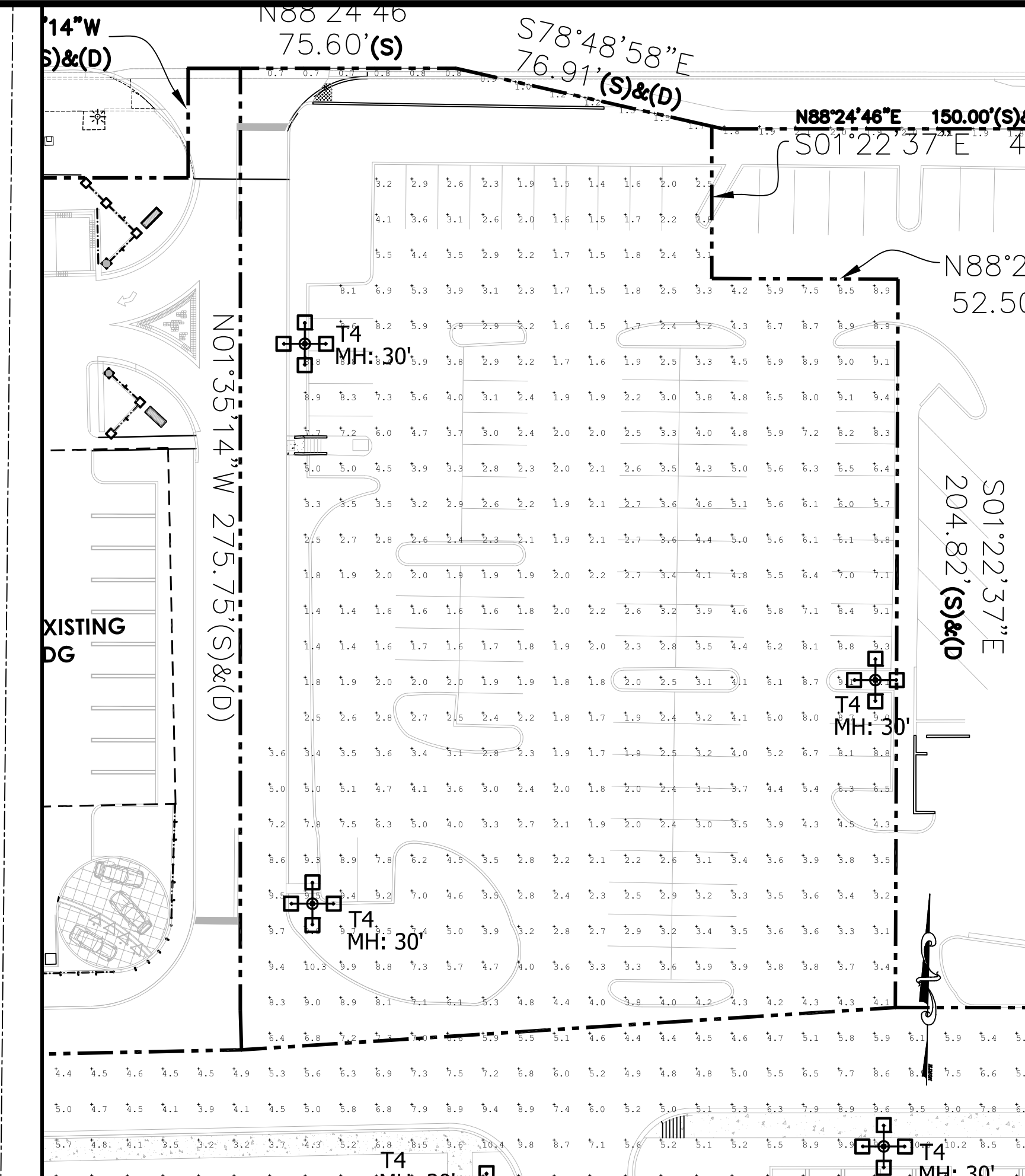
Architectural Site Photometrics Plan

AAC
P223-12000033
05/07/2024

Scale: 1/32" = 1'-0"

N.W. 3RD AVENUE

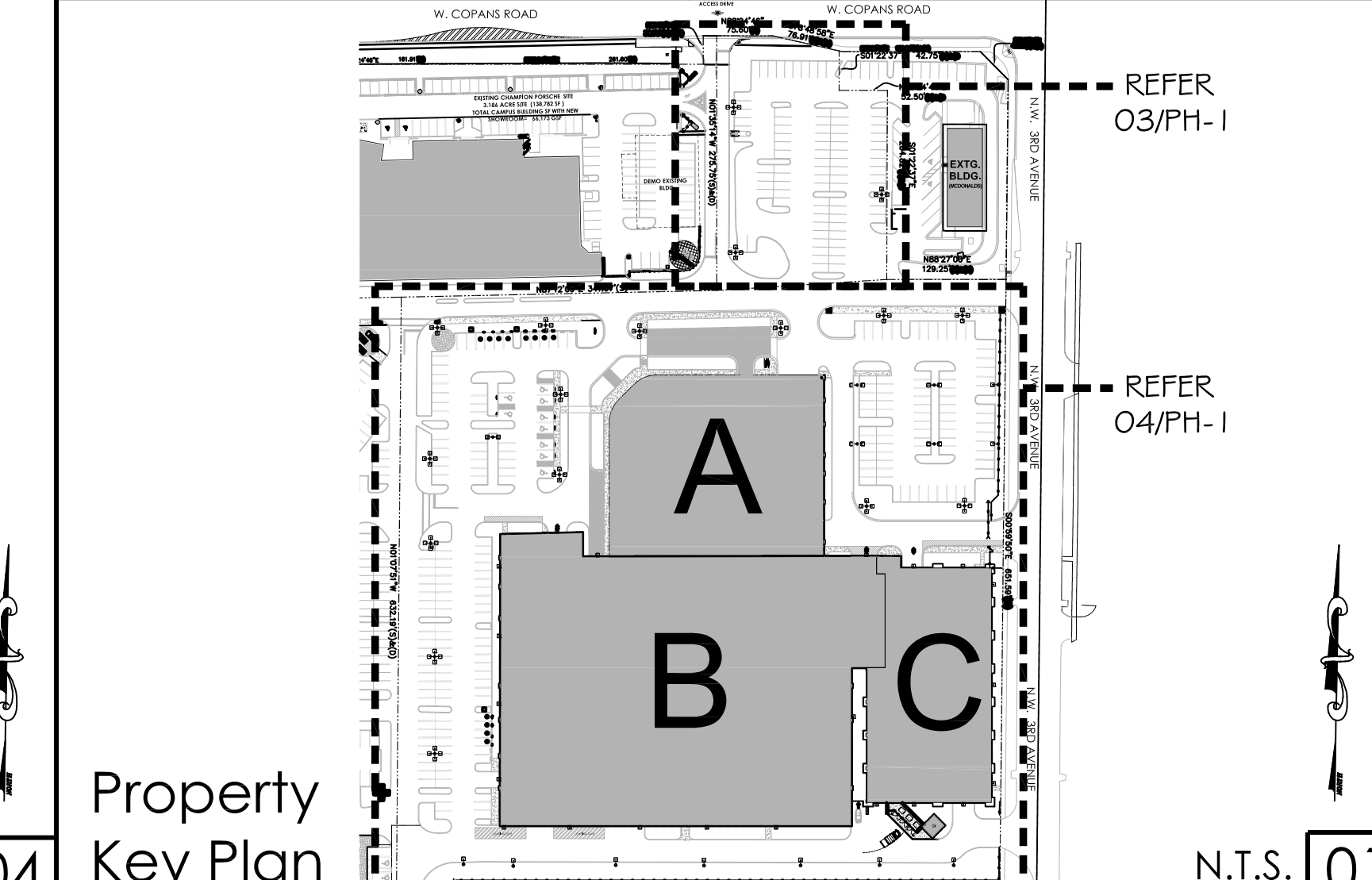
N.W. 3RD AVENUE



Arch. Site Photometrics Plan Scale: 1/32" = 1'-0"

FIXTURE LABEL	T1	T2	T3	T4	T5
ZONE / LOCATION	SITE LIGHTING	SITE LIGHTING	BUILDING EXTERIOR	SITE LIGHTING	SITE LIGHTING
MFG.	CREE	CREE	CREE	CREE	CREE
CATALOG NUMBER	OSQL-C-30L-40K7-38-XX-NM-XX, (SINGLE HEAD)	OSQL-C-22L-40K7-5M-XX-NM-XX, (2 @ 180 DEGREES)	OSQM-C-9L-40K7-4M-XX-NM-XX, (SINGLE HEAD)	OSQL-C-22L-40K7-5M-XX-NM-XX, (4 @ 90 DEGREES)	OSQM-C-4L-40K7-38-XX-NM-XX, (SINGLE HEAD)
DESCRIPTION	LED SITE LIGHT POLE FIXTURE (1-WAY SINGLE)	LED SITE LIGHT POLE FIXTURE (2-WAY DOUBLE BACK-BACK)	BUILDING WALL MOUNTED LED SCONCE	LED SITE LIGHT POLE FIXTURE (4-WAY QUAD)	BUILDING WALL MOUNTED LED SCONCE
LAMPS	LED INCLUDED	LED INCLUDED	LED INCLUDED	LED INCLUDED	LED INCLUDED
MOUNTING	SITE LIGHT POLE	SITE LIGHT POLE	WALL MOUNTED SURFACE	SITE LIGHT POLE	WALL MOUNTED SURFACE
VOLTAGE	120-277V	120-277V	120-277V	120-277V	120-277V
WATTAGE	175 W	131 W	55 W	131 W	37 W
QTY.	9	7	17	16	3
REMARKS	MOUNT HTG. +30'	MOUNT HTG. +30'	MOUNT HTG. +18'	MOUNT HTG. +30'	MOUNT HTG. +18'

Site Lighting Fixture Schedules



Property Key Plan

CONSULTANT

STATE OF FLORIDA
REGISTERED ARCHITECT

Gregory B. Molina

FL REG. # AR 93354

DATE: 04-02-2024

COPYRIGHT © 2024 GBM ARCHITECTURE, PA. ALL RIGHTS RESERVED. THIS DOCUMENT, DESIGN, OR PARTS THEREOF, MAY NOT BE WRITTEN, COPIED, OR REPRODUCED IN ANY FORM OR BY ANY MEANS WITHOUT THE WRITTEN CONSENT FROM GBM ARCHITECTURE, PA.

GBM
ARCHITECTURE PA

ARCHITECTURE
MASTER PLANNING

AA26002322

330 HINMARSHREE STREET, SUITE 102
FORT LAUDERDALE, FLORIDA 33312

T : 9 5 4 . 9 9 9 . 5 6 3 3
C : 9 5 4 . 8 1 2 . 6 6 8 0

E: GREGM@GBMARCHITECTURE.COM
WEB: WWW.GBMARCHITECTURE.COM

Digitally signed by
Gregory B. Molina
DN: cn=US, o=Florida,
l=Fort Lauderdale,
serialNumber=AA1202,
30831312648, c=GBM
Architecture, PA,
cn=Gregory B. Molina,
email=ggregm@gbmarchi
tecture.com,
date=2024.04.02
11:25:05-0400'

Gregory B. Molina

PORSCHE CHAMPION CENTER
GENERATION V

300 NW 24TH STREET
POMPANO BEACH, FL 33064

BROWARD COUNTY

CITY OF POMPANO BEACH

DRAWING ISSUE DATES.

03-26-23
DRC COMMENTS REV # 1

ARCHITECTURAL SITE
PHOTOMETRICS PLAN

SHEET

PH-1

PROJECT 220802

DATE

PERMIT NO.